

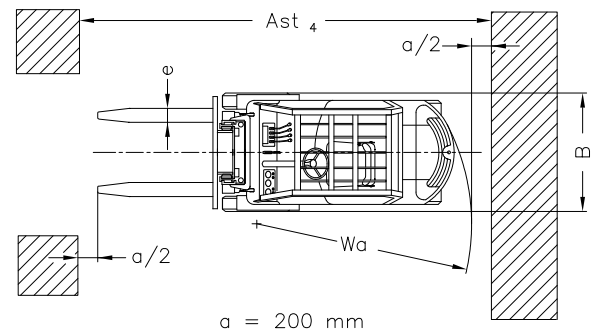
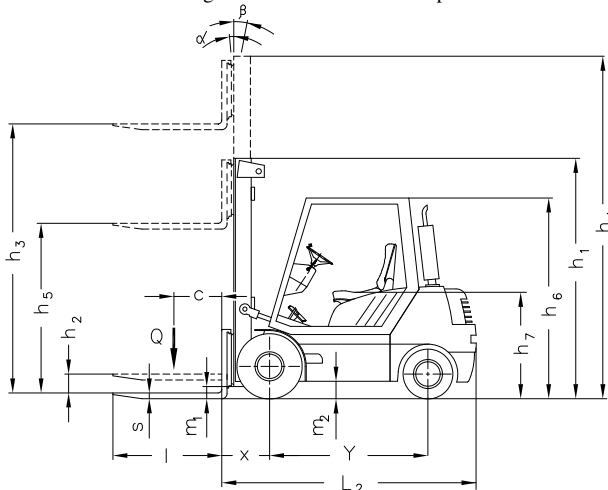
RECORD 3S		SPECIFICATION VDI 2198						
Characteristics	1	Manufacturer	BALKANCAR RECORD					
	2	Type			DV1992.33.121S DV1992.33.155S <sup>1)</sup>	DV1994.33.121S DV1994.33.155S <sup>1)</sup>	DV1996.33.121S	
	3	Load capacity	Q	kg	6000	7000	8000	
	4	Load center	C	mm	600			
	5	Drive unit	Battery/diesel/LPG				Diesel	
	6	Type of operation	Pedestrian/Rider seated/Stand-on				Rider seated	
	7	Tyres	L – pneumatic; SE – superelastic, front/rear				L/L (SE/SE)	
	8	Wheels (x–driven)	Number, front/rear				4x / 2	
Dimensions	9	Lift	h <sub>3</sub>	Lift height	mm	3300, 4000, 4500		
	10		h <sub>2</sub>	Free lift	mm	96		
	11		h <sub>5</sub>	Extended free lift	mm	-		
	12	Fork carriage	According to DIN 15137, class/type				4A	
	13	Fork dimensions	s/e/l	Thickness/width/length	mm	60 x 130 x 1150 <sup>2)</sup>	60 x 200 x 1200 <sup>2)</sup>	
	14	Tilt angle	α/β	Forward/backward	(°)	5°±1°/10°±1°		
	15	Overall dimensions	L <sub>2</sub>	Length	mm	3450	3575	
	16		B	Width	mm	2350		
	17		h <sub>1</sub>	Height, mast lowered	mm	2610, 2960, 3210		
	18		h <sub>4</sub>	Height, mast extended	mm	4300, 5000, 5500		
	19		h <sub>6</sub>	Height of overhead guard	mm	2420		
	20		h <sub>7</sub>	Height of seat	mm	1400		
	21	Turning radius	Wa	Outer turning radius	mm	4100	4250	
22	Load distance	X	Front axle center to fork face	mm	615	640		
23	Aisle width	Ast <sub>4</sub>	For pallets 800x1200	mm	4750	4850		
			For pallets 1000x1200	mm	4950	5050		
Performance	24	Speed	Travel	with load/without load	km/h	I – 10, II – 20		
	25		Lifting	with load/without load	m/s	0,3/0,4		
	26		Lowering	with load/without load	m/s	0,3/0,4		
	27	Rated drawbar pull	With load			kN	I – 40, II – 28	
28	Climbing ability	With load/without load			%	I – 28, II – 19		
Weight	29	Weight	Including battery acc. to ISO 5053 – 87			kg	9500 10400 11000	
	30	Axle load	With load	front/rear	kg	13500/2000	15300/2100	
	31		Without load	front/rear	kg	4600/4900	4800/5600	
Chassis	32	Tyres	Number, front/rear			4 / 2		
	33		Size, front			8,25-15		
	34		Size, rear			8,15-15		
	35	Wheelbase	Y	mm	2250	2350		
	36	Track width	Front/rear			mm	1470	
	37	Ground clearance	m <sub>1</sub>	Beneath mast with load			mm	200
	38		m <sub>2</sub>	Center of wheelbase with load			mm	245
	39	Service brake	Mech./hydr./pneum./combined			Hydraulic		
	40	Parking brake	Hand/foot			Hand		
	Drive	41	Battery	Type			Panzer	
42		Voltage/rated capacity (5h)			V/Ah	12/135		
43		Weight			kg	41		
44		Internal combustion engine	Manufacturer, type			VAMO D3900K		
45			Engine performance to DIN 70020			kW	66,2	
46			Rated speed to DIN70020			min <sup>-1</sup>	2600	
47			Number of cylinders/displacement			cm <sup>3</sup>	4/3860	
48			Fuel consumption			l/h	4	
49		Transmission	Type, speeds (forward/backward)			Hydrodynamic PST2, 2/2		
50		Clutch coupling	Type			Hydro transformer		
51	Operating pressure	For attachments			MPa	14		
52	Noise level	Average value at operator' ear			dB(A)	85		

1) Hydrodynamic transmission 6870.2 and drive axle 6203.77

2) Recommended fork dimensions

\* Forklifts in accordance with BDS EN 1726-2

\* Other combinations of engine and transmission are optional.



a = 200 mm